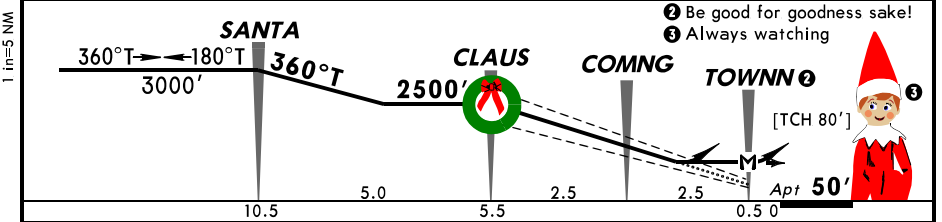
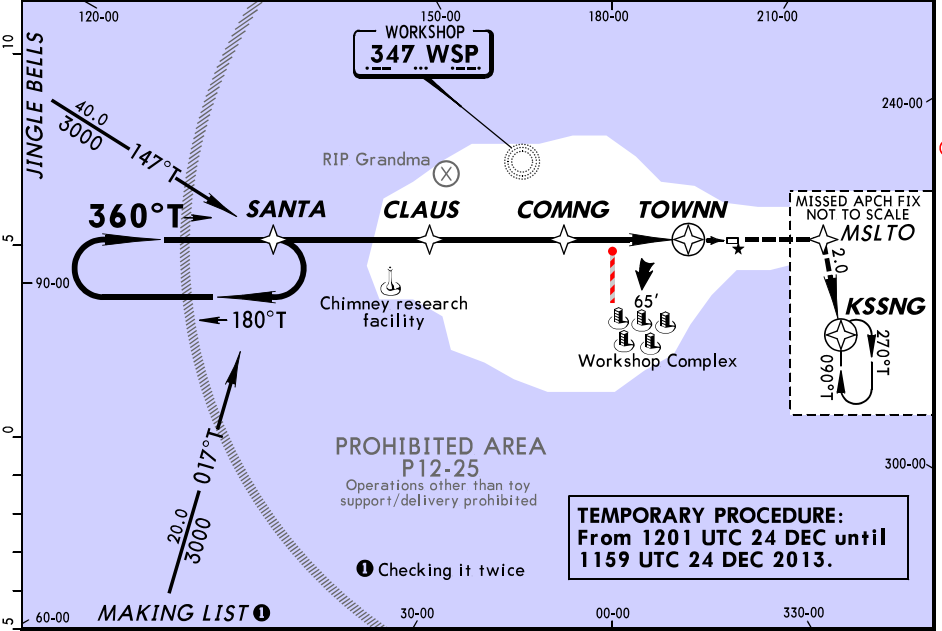




**NTPL/POL** **JEPPESEN** **NORTH POLE VILLAGE**  
**SANTA'S WORKSHOP INTL** (12-25) 25 DEC 13 **RNAV (GPS) Rwy 18**  
 24 Dec 1201Z

|  |                             |   |  |  |  |
|--|-----------------------------|---|--|--|--|
| ARCTIC Center<br><b>122.8</b>  |                             | NORTH POLE Approach<br><b>122.8</b> when ELFCOM inop. |  | WORKSHOP Traffic<br><b>122.8</b> when ELFCOM inop. |  |
| RLS (Reindeer Landing System)  | Final Apch Crs <b>360°T</b> | Minimum Alt <b>CLAUUS</b> <b>2500'</b> (2450')        | RLS DA(H) (CONDITIONAL) <b>250'</b> (200') | Apt Elev <b>50'</b>                                | <br><b>1000'</b><br><b>MSA WSP NDB</b> |
| <b>MISSED APCH:</b> Climb to 2500' direct MSLTO, then <b>RIGHT</b> turn direct KSSNG and hold.   |                             |   |  |  |  |
| Alt Set: INCHES Trans level: FL 180 Trans alt: 18000'<br><b>CAUTION: Departures may be illuminated by blinding red nose.</b><br><b>CAUTION: Supersonic heavy departures; non-sleigh traffic discouraged.</b><br>1. Reindeer practice flights year-round. 2. Flights in the vicinity may be conducted under the influence of egg nog. 3. No unapproved winter operations. 4. Postal flights with letters to Santa receive priority sequencing. 5. Reindeer and Elves on and in vicinity of runway. 6. Runway does not maintain stationary location. |                             |   |  |  |  |



|                            |        |     |     |     |     |      |   |      |
|----------------------------|--------|-----|-----|-----|-----|------|---|------|
| Speed (Reindeer operating) | 4      | 5   | 6   | 7   | 8   | 9    | SALS<br><b>2500'</b><br>TINSEL TWINKLE<br>MSLTO |      |
| Glide Path Angle           | [7.0°] | N/A | N/A | 800 | 998 | 1140 |   | 1430 |
| MAP at TOWNN               |        |     |     |     |     |      |   |      |

|  |            |                    |             |               |             |   |            |                          |
|--|------------|--------------------|-------------|---------------|-------------|---|------------|--------------------------|
| <b>STRAIGHT-IN LANDING RWY 18</b><br>RLS DA(H) <b>250'</b> (200')<br>LOC (Rudolph Out) DA(H) <b>400'</b> (350')<br>2 or more reindeer inop MDA(H) <b>500'</b> (450') |            |                    |             |               |             | <b>CIRCLE-TO-LAND</b><br>Authorized only when Rudolph available |            |                          |
| FULL   | TINSEL out | TINSEL/TWINKLE out | TINSEL out  | TWINKLE out   | TINSEL out  | TWINKLE out   | Rdr in Svc | MDA(H)                   |
| 6  |            |                    |             |               |             |   | 6          | <b>500'</b> (450') - 1   |
| 7  | RVR 0      | RVR 40 or 3/4      | RVR 50 or 1 | RVR 40 or 3/4 | RVR 50 or 1 | RVR 60 or 1/4   | 7          | <b>550'</b> (500') - 1   |
| 8  |            |                    |             |               |             |   | 8          | <b>650'</b> (600') - 1/2 |
| 9  |            |                    |             |               |             |   | 9          | <b>750'</b> (700') - 2   |

Reproduced with permission of Jeppesen. FOR REINDEER NAVIGATION ONLY. © Jeppesen, 2013.